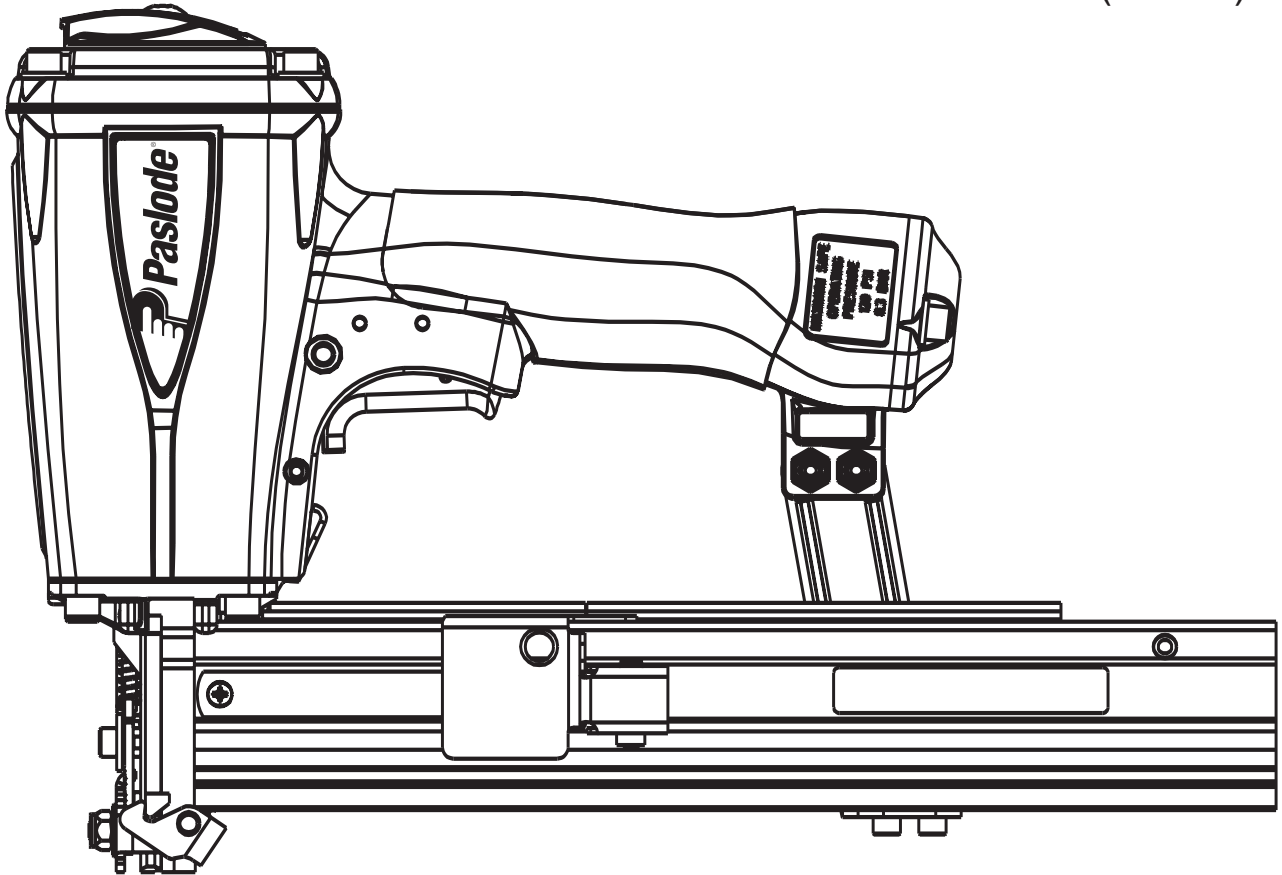




---

**INSULATION SHEATHING STAPLER**  
**MODEL S200 W16**  
**WIDECROWN (15/16")**



---

---

**TOOL SCHEMATIC AND PARTS**

**IMPORTANT!**  
**DO NOT DESTROY**

Always refer to safety and operating manuals, #403606, #405218 and #405222 for detailed information on this tool. It is the customer's responsibility to have all operators and service personnel read and understand this information.

# PARTS LEGEND

S200 W16,501265

1	501043	1	T.H.S.C.S. 1/4-20 x 1/2"
2	500956	1	Cap Diffuser
3	501299	6	S.H.C.S. 1/4-20 x 1"
4	501254	1	Cap
5	402717	1	Conical Spring
*6	404230	1	Retaining Ring
7	501250	1	Upper Valve Piston
*8	091542	1	O-Ring
9	404054	1	Seal, Main Valve
10	404056	1	Lower Valve Piston
*11	090927	1	O-Ring, Main Valve
*12	092775	1	O-Ring, Main Valve
*13	092773	1	O-Ring, Main Valve
*14	404256	2	O-Ring
15	500954	1	Post, Main Valve
16	015660	1	S.H.C.S. 10-24 x 1/2"
17	403582	1	Driver Blade Nut
18	405430	1	O-Ring, Piston
19	501252	1	Piston
*20	404182	1	Driver Blade
21	501322	1	Sleeve Retainer
22	402725	1	Seal Sleeve
23	405243	1	Flange Sleeve
24	501251	1	Sleeve
*25	402728	1	O-Ring, Sleeve
*26	091966	1	O-Ring, Sleeve
*27	500369	2	O-Ring, Sleeve
28	501227	1	Bumper Retainer
29	500975	1	Gasket Cap
30	501140	1	Logo Housing Left
31	501141	1	Logo Housing Right
32	402708	1	Gasket Nose Flange
33	501229	1	Bumper
34	402754	1	Seal Driver Blade
35	402706	1	Flange Nose
36	091545	4	S.H.C.S. 1/4-20 x 7/8"
37	501023	1	Grip Handle
38	500957	1	Housing
▲39	500963	1	End Plug
40	097748	1	Spring Valve Pin
41	097746	1	Valve Pin
*42	092174	1	O-Ring, Valve Body
43	026133	2	Roll Pin 1/8 x 1
44	401958	1	Valve Body
45	402668	3	Retaining Washer
46	501008	1	Trigger Lever
47	501010	1	Trigger
48	501009	1	Roll Pin
49	402669	1	Trigger Pin
50	092037	5	Locknut
▲51	004502	4	S.H.C.S. 10-32 x 5/8"
52	402781	1	Rail Bracket
▲53	004224	2	S.H.C.S.10-32 x 3/8"
54	402743	1	Pin Negator Drum
55	091534	1	Drum, Negator
*56	091532	1	Negator
▲57	091568	1	Bd. Head Screw 6-32 x 1/4"
58	402760	1	Follower
59	402486	1	Retaining Washer
60	402758	1	Latch Follower Button
61	402759	1	Spring Follower Latch
62	402740	1	Roll Pin 3/32 x 7/16
63	402780	1	Pivot Rail Cover Assembly
64	501291	1	Nameplate
65	404849	1	Rail & Rail Cover Assembly
**66	500459	1	Warning Label
67	404698	2	Roll Pin Assembly
68	402730	1	Pivot Pin Front Guide
69	405079	1	Spring Front Guide Latch
70	501208	1	Latch Guide -
71	501209	1	Latch Pin
72	501206	1	Back Plate
73	501212	1	Front Guide
*74	402734	1	Spring W.C.E.
75	402763	1	Upper W.C.E.
76	402629	2	Hardened Washer
77	403716	2	S.H.C.S. 10-32 x 5/16"
78	402608	1	Lower W.C.E.
79	402736	1	Flat Washer #10
*80	402738	1	Spring
81	501320	1	Guide Block
82	071297	1	Roll Pin 1/8 x 1-1/8"
83	501244	1	Intermediate W.C.E.

\* Denotes normal wear items.

\*\* Make sure warning label (500459) is properly affixed. Replace if necessary. Label available at no charge through the Service Dept.

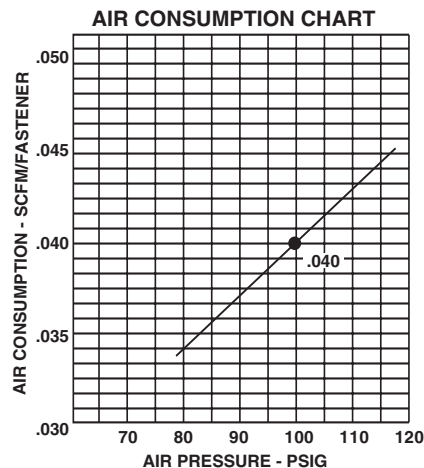
▲ Apply Loctite 242 (Blue) Part No. 093500

→ Denotes new change.

## Fastener sizes:

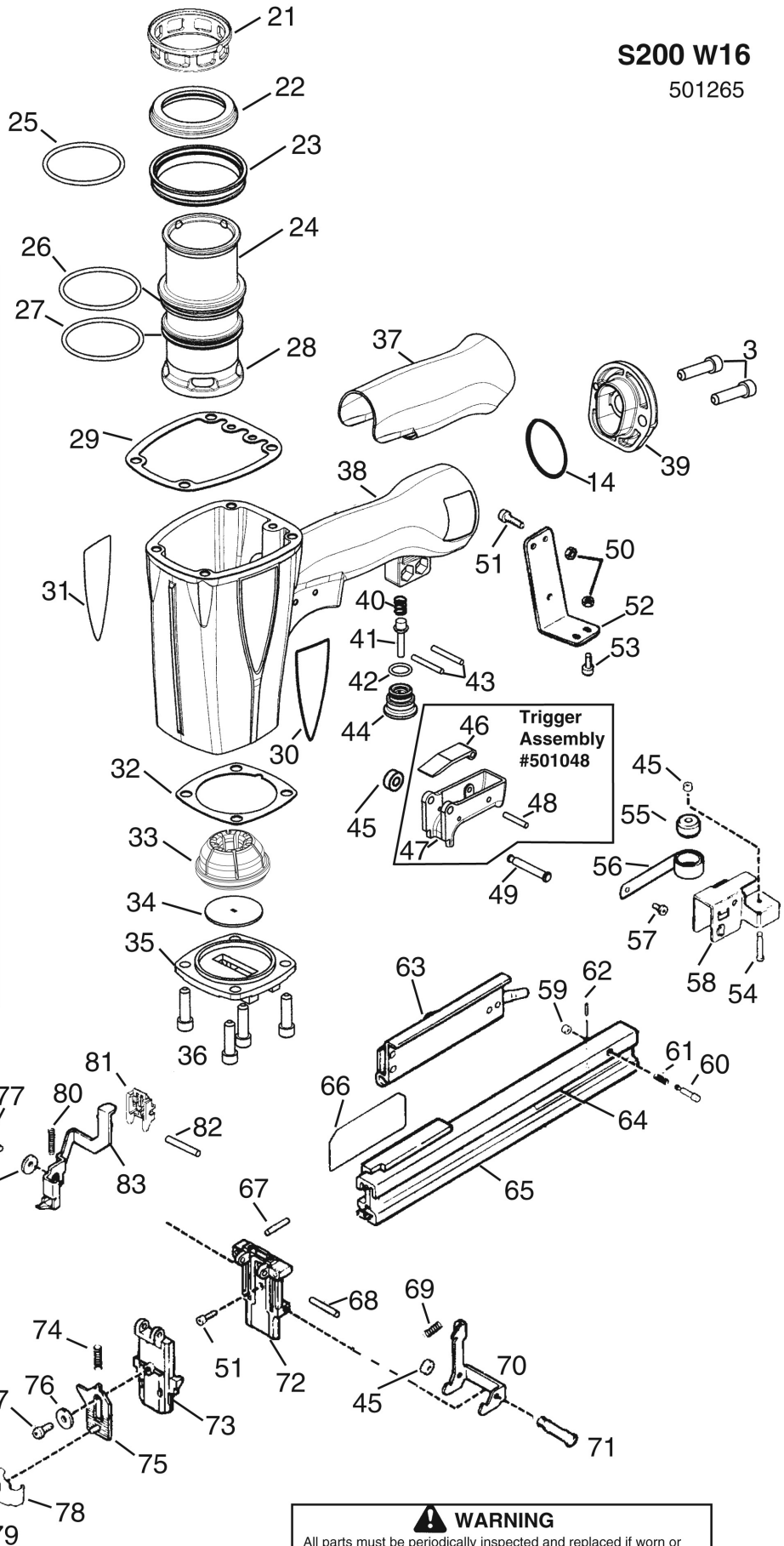
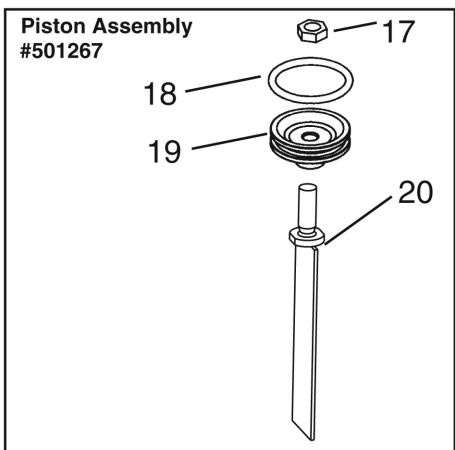
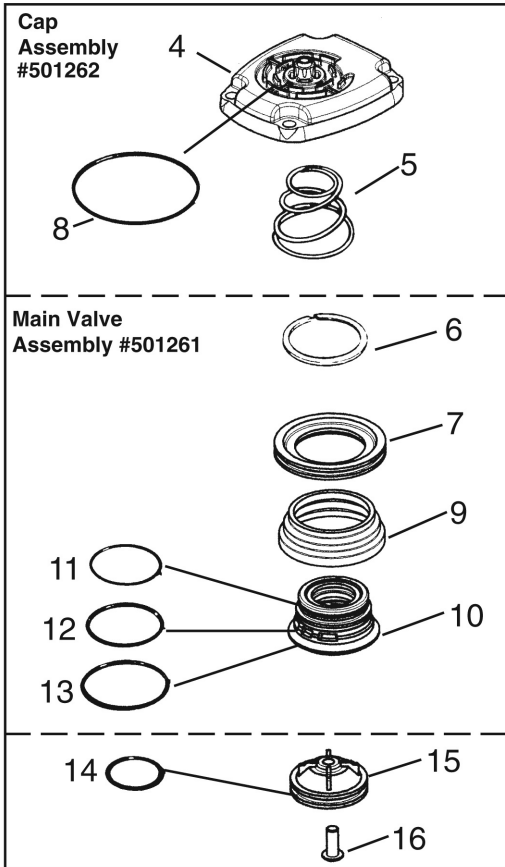
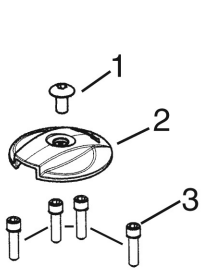
Length: 3/4" to 2"

Gauge & Crown: 16 ga. 15/16 Crown



# S200 W16

501265

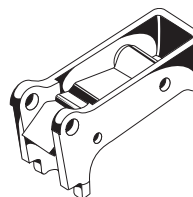


**WARNING**  
All parts must be periodically inspected and replaced if worn or broken. Failure to do this can affect the tool's operation and present a safety hazard

# ACCESSORIES

## Sequential Operating Kit

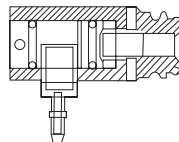
This special attachment is designed for sequential operation (stops "contact" firing). The operator must depress and hold the work contacting element against the worksurface before pulling the trigger. This sequence must be repeated each timethe tool drives a fastener.



Part No. 501039

## Remote Fire Valve

This valve via a positive air signal allows a machine mounted tool to be operated from an automatic air valve or foot pedal system.



Part No. 1X0713

### Safety Glasses

Clear



Part No. 401382

### Belt Hook

Attaches to tool enabling you to carry tool on belt holder.

Part No. 500955

### Adjustable Foam Contacting Element

Part No. 402997

### Rear Activating Contacting Element

Part No. 1x1026

### Trigger Valve Repair Kit

This kit repairs all trigger valve air leaks.

Part No. 219224

### Lubricants and Loctite

Lubricant 1 lb.

Part No. 403734

Lubricant 5 gram tubes

Part No. 219188

Loctite 242 (Blue) 1 oz.

Part No. 093500

Lubricating Oil 16 oz.

Part No. 403720

Lubricating Oil 8 oz. with Antifreeze

Part No. 219090

### Tool Cleaner

Ideal cleaner for all Paslode tools.

Part No. 219348

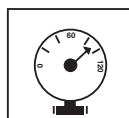
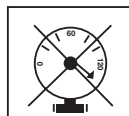
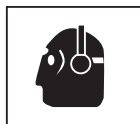
# SAFETY INSTRUCTIONS

WEAR EYE AND HEARING PROTECTION

DO NOT EXCEED MAXIMUM  
RECOMMENDED AIR PRESSURE



Always wear hearing protection and eye protection devices, including side shields when operating or working in the vicinity of a tool.



Operate the tool using only the recommended air pressure. Do not exceed the maximum air pressure marked on the tool. Be sure the air pressure gauge is operating properly and check it at least twice a day.

Never use any bottled air or gases such as oxygen to operate the tool since they could cause the tool to explode.